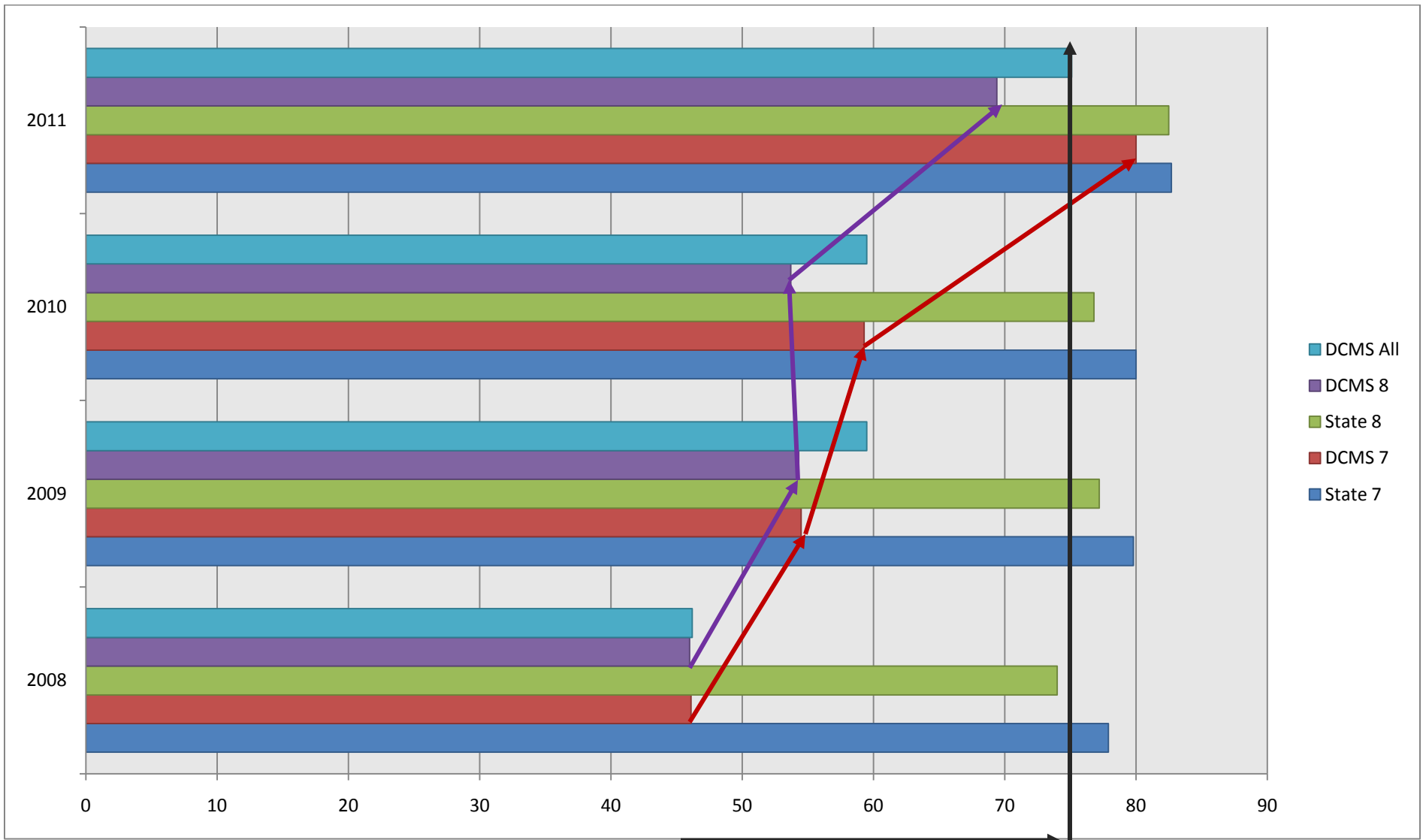
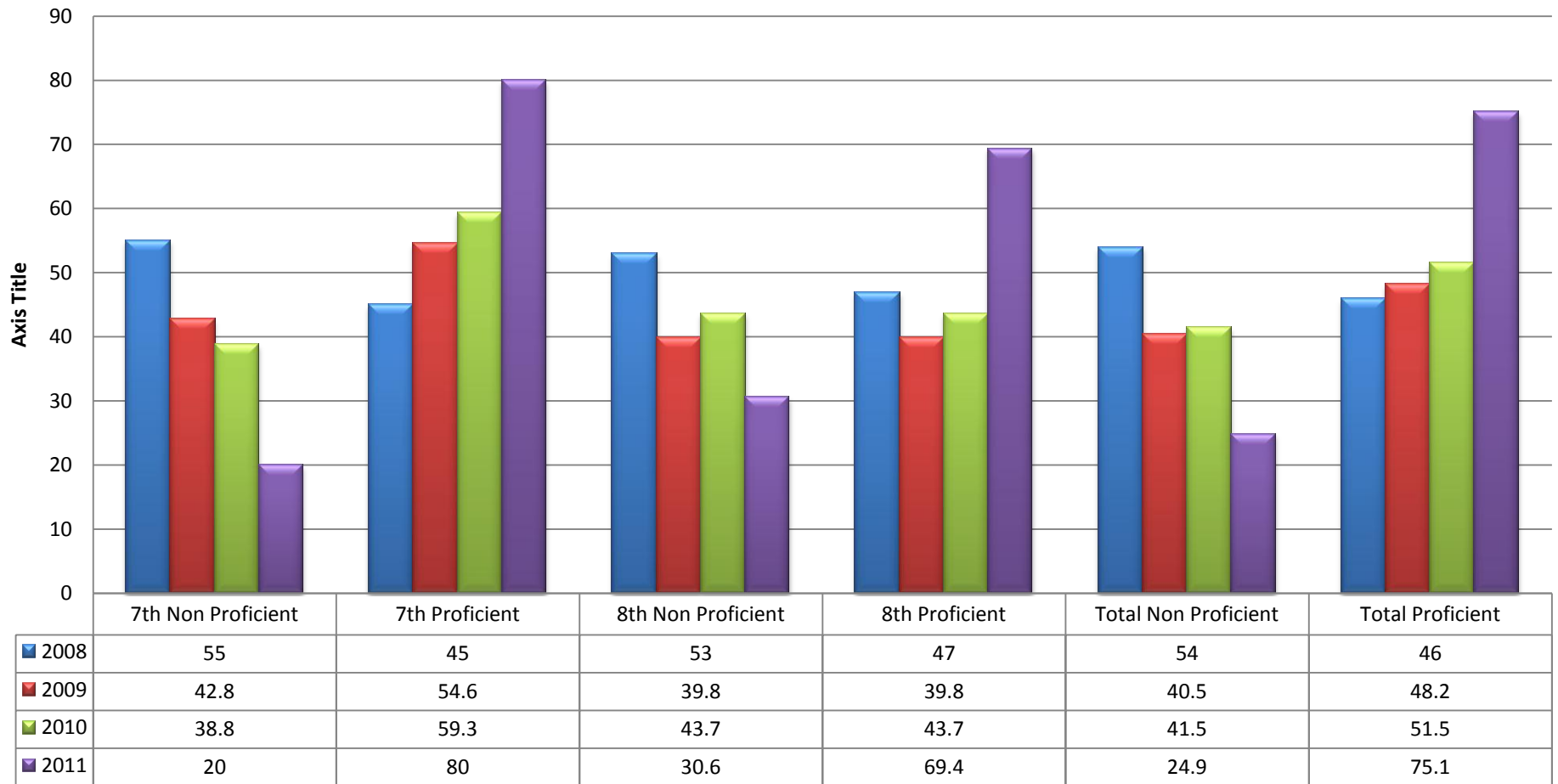


Math Three Year Performance Growth Measured Against State Average



Dodge City Middle School has made a 29.9 point gain in math proficiency in the last three years.

Math Three Year Proficiency Range



Dodge City Middle School has moved 29 percent of its non-proficient population to proficiency in the last three years. In 2008 we had 54% of our student population scoring below proficiency. As of the school year 2011 we have 24.9% of our students who score below proficiency in math. We are now 15.9 percentage points away from making the state target in math. Next years target in math will be 91.1.