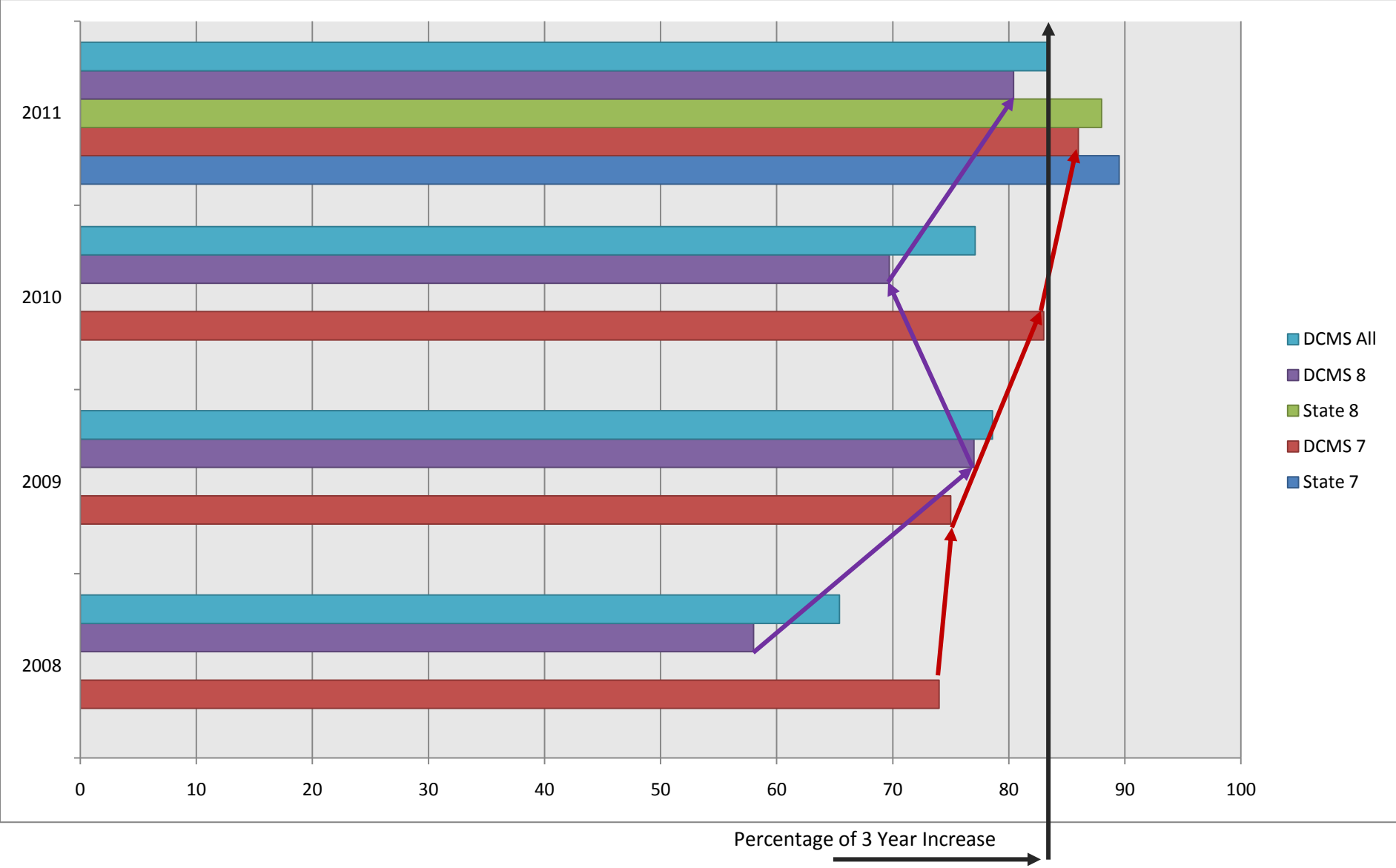
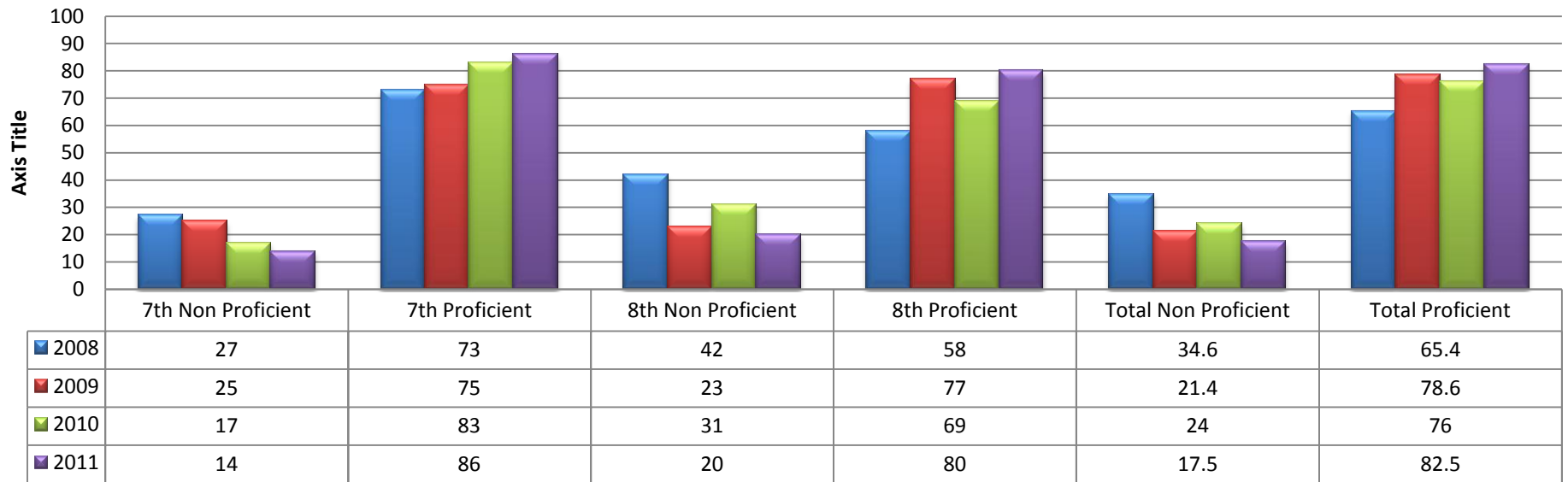


Reading Three Year Performance Growth Measured Against State Average



Dodge City Middle School has made a 29.6 point gain in reading proficiency in the last three years.

Reading Three Year Proficiency Range



Dodge City Middle School has moved 17.1 percent of its non-proficient population to proficiency in the last three years. In 2008 we had 34.6 percent of our student population scoring below proficiency. As of the school year 2011 we have only 14% of our students who score below proficiency in reading. We are now 5.9 percentage points away from making the state target in reading. Next years target in reading will be 91.9.